

56/196

MARINER'S COVE PLAT ONE

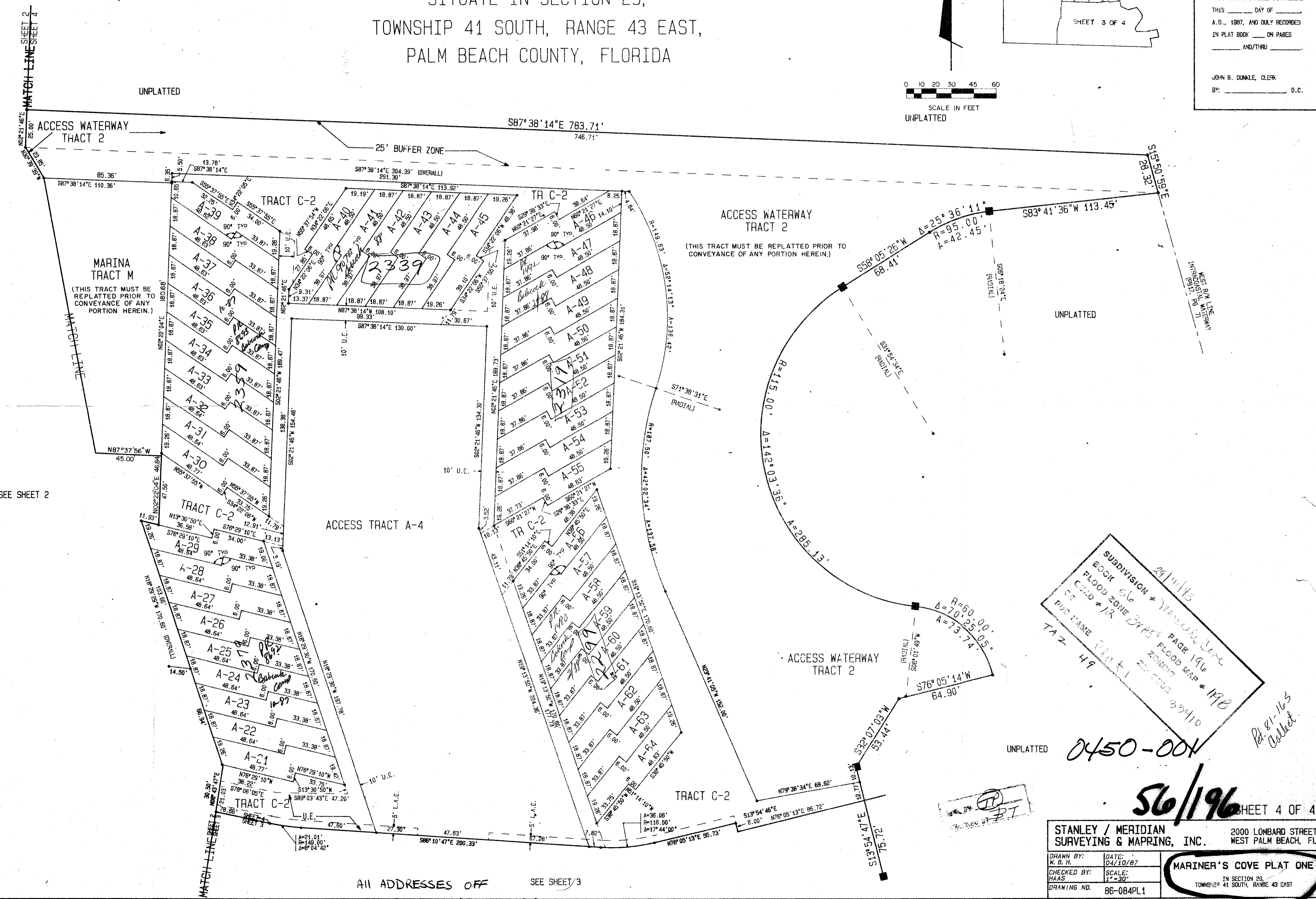
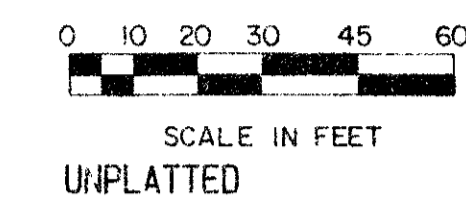
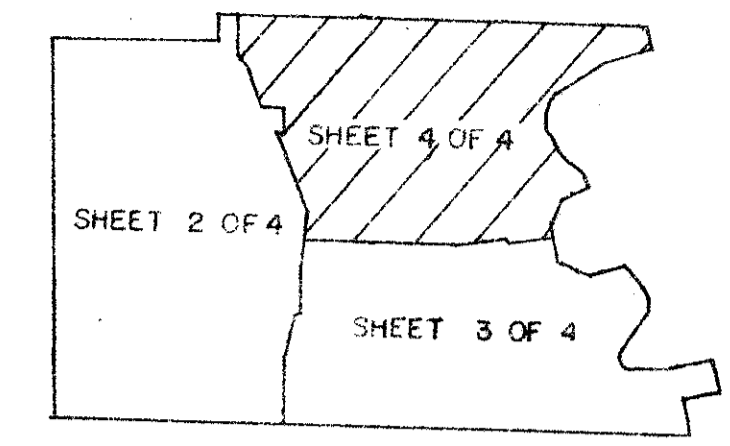
PART OF OAK CREEK, A P.U.D.
SITUATE IN SECTION 29,
TOWNSHIP 41 SOUTH, RANGE 43 EAST,
PALM BEACH COUNTY, FLORIDA

196

STATE OF FLORIDA)
COUNTY OF PALM BEACH)

THIS PLAT WAS FILED FOR RECORD
THIS _____ DAY OF _____
A.D., 1987, AND DULY RECORDED
IN PLAT BOOK _____ ON PAGES
_____ AND/THRU _____

JOHN B. DUNKLE, CLERK
BY: _____ D.C.



Subdivision # 24111/13
BOOK 56
FLOOD ZONE BYAS FLOOD MAP # 196
CADD # 12
PUB NAME Project 1
TAZ 49
23410
0450-001
P. 81-165 Collect

STANLEY / MERIDIAN
SURVEYING & MAPPING, INC. 2000 LOMBARD STREET
WEST PALM BEACH, FL
DRAWN BY: N. B. H. DATE: 04/10/87
CHECKED BY: HAAS SCALE: 1"=30'
DRAWING NO. 86-084PL1
MARINER'S COVE PLAT ONE
IN SECTION 29,
TOWNSHIP 41 SOUTH, RANGE 43 EAST

All ADDRESSES OFF SEE SHEET/3
OF TREASURE ISLE DR.

PLAN HOLD CORPORATION • IRVINE, CALIFORNIA
RECORDED BY NUMBER 07248
RECORDED BY NUMBER 07248
RECORDED BY NUMBER 07248
RECORDED BY NUMBER 07248